

ALPACA CLASSIC

2016

Classic 2012: Bozedown Celestial

Showtime 2015

Beck Brow Trendsetter - Best in Show Female

Classic 2012: Alpaca Stud Inca Fusion Snapshot

Three Counties 2016

Popham Suri Sundae - Champion

Classic 2012: Magic Charm

NWAG Alpaca Championship

Beck Brow Boxter - Champion

Classic 2013: Bozedown Sanyati

National Show 2016

Alpaca Farm Eggnog - Supreme Champion

Classic 2013: Bozedown Sanyati

Alpaca Fiesta 2016

Alpaca Farm Freddie - 1st

Classic 2014: Jessamine Sugar Loaf

National 2016

Snowhill Black Pearl - 1st

Classic 2014: Bozedown Ferrera

Futurity 2015

Bozedown Ferrera - Reserve Champion

Classic 2014: Alpaca Stud Uptown Girl

National Show 2016

Merrifield Keeping The Faith - 2nd

Classic 2012: Alpaca Stud Inca Fusion Snapshot

National Show 2014

Popham Suri Canon - Reserve Champion

Classic 2012: Bozedown Celestial

Alpaca Fiesta 2014

Beck Brow Bespoke - Champion

Classic 2012: Jessamine Hustle

Alpaca Fiesta 2015

Rushmere Galatea - 1st

Classic 2013: Alpaca Stud I.K. Agatha

Alpaca Fiesta 2016

Pinnacle Incan Prince - Champion

Classic 2013: Alpaca Stud Charleston

National Show 2016

Alpaca Stud G.L. Wordsworth - Champion

Classic 2013: Bozedown Bally

Alpaca Fiesta 2015

Popham Claudia - Champion

Classic 2014: Phoenix Gryffindor

Northumberland 2016

Cherry Hope Benedictine - Supreme Champion

Classic 2015: Bozedown Shadow Dancer

National Show 2016

Owned by Merrifield Alpacas - Champion



17th & 18th SEPTEMBER 2016
IT'S ALL IN THE BREEDING

www.alpacaevent.co.uk



2016 ITINERARY

FRIDAY EVENING SEPTEMBER 16TH 7:00 - 9:00 PM

The Alpaca Stud and Bozedown Alpacas invite you to join us for drinks and an opportunity to preview the sale pens.

7:15 - 8:00 pm Brett Kaysen: "How EBV's have led to progression in the cattle industry"!

SATURDAY SEPTEMBER 17TH 2016 ITINERARY

9:00 am Coffee and Social!

9:30 am Welcome - Introducing the Programme and Sales Procedure

10:00 am Diversification Seminar - by Sarah Riley of Inspired Camping

11:30 am Viewing of Alpacas

12:30 pm Lunch

2:00 pm Workshops 1, 2 and 3 run concurrently

3:30 pm Viewing of Alpacas

5:00 pm Supper

6:30 pm Alpaca Classic 2016 Auction

To round off the day join us to witness a charitable spectacular then party time!

SUNDAY SEPTEMBER 18TH 2016 ITINERARY

9:00 am Coffee and Social!

9:15 am Workshops 1, 2, 3, 4, and 5 run concurrently

10:45 am Coffee and Social

11:00 am Workshops 1, 2, 3, 4 and 5 run concurrently

12:30 pm Lunch

1:30 pm Workshops 2 and 3 run concurrently

3:00 pm Close

Please refer to page 5 for full list of workshops

GUEST LIST

If you would like to attend then please add your name to our guest list.

Either telephone, email or add your name on the guest list on our website

www.alpacaevent.co.uk/guestlist and we will send you an invitation.

Individual ticket price £20 (including VAT) per person.

VENUE

The Alpaca Stud, Yeat Wood Farm, Wotton Underwood, Aylesbury, Bucks HP18 0RL

RECOMMENDED HOTEL

Holiday Inn Aylesbury

New Road

Weston Turville

Aylesbury

HP22 5QT

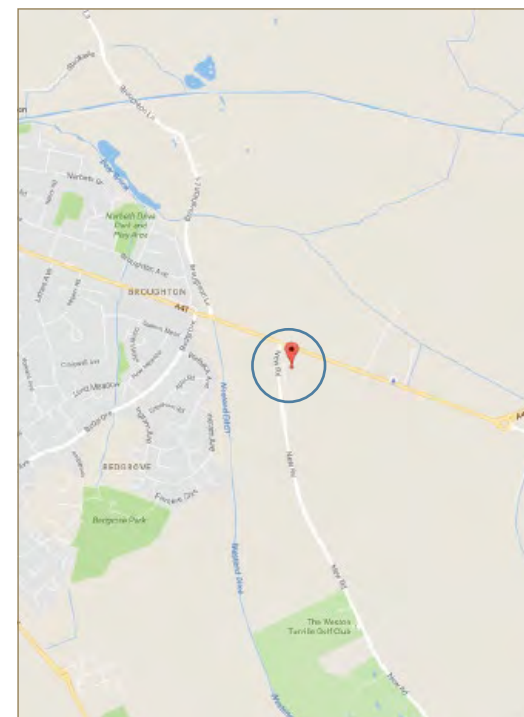
www.hiaylesburyhotel.co.uk

0129 673 4026

Reference: AP9

Friday Double Occupancy £80 B&B

Saturday Double Occupancy £120 B&B





The UK's favourite alpaca feeds.

As a key supplier to many of the UK's most established alpaca herds since 2003, we'd like to think we know a thing or two about camelid nutrition.

From our acclaimed Camelibra NG-2, providing the correct nutritional balance to maintain healthy digestion from natural forage/fibre based diets; our unique Hembra & Cria to maximize the growth and fibre development of the newborn from birth to post weaning; or Fibregest, our high quality soluble fibre feed, we have the perfect answer for optimum nutrition whatever your situation.

No minimum order quantities, nationwide sales and full nutritional telephone support backup all come as standard too.

www.gwfnutrition.com

For further information, stockist details and to order, please visit gwfnutrition.com or call 01225 708482.

gwfnutrition.com®

THE ALPACA STUD AND BOZEDOWN ALPACAS ARE PROUD TO PRESENT THE ALPACA CLASSIC 2016!

The Alpaca Classic, jointly hosted by Bozedom Alpacos and The Alpaca Stud, is now a much anticipated highlight of the UK Alpaca Calendar. 2016 is the 5th annual event, with the weekend of 16th, 17th and 18th September, bringing yet another educational but fun event with plenty of the usual twists and turns to keep things interesting!

Our 'Hall of Fame' display on the catalogue cover portrays Prizewinning alpacas offered at previous Classic Auctions, both those which sold, along with those which didn't sell - missed opportunities! Secure future Prizewinners for your own farm right here!

New Venue!

This year's Classic will be hosted by The Alpaca Stud at their new home of Yeat Wood Farm set in the beautiful Buckinghamshire village of Wotton Underwood. This will be the inaugural event for Yeat Wood Farm, so come along and help us celebrate!

At the 2016 Classic we are changing the format from last year and offering you a range of interesting workshops to include plenty of practical, hands-on experience as well as some interesting thoughts on how to progress your business.

As in previous years both Bozedom Alpacos and The Alpaca Stud will release some of their most coveted genetics to be offered for sale at the Alpaca Classic. We are certain that the groups on offer will include something to suit any breeding programme. Following on from the great success of last year's sale there will again be an Auction of 10 lots alongside a pen sale.

On the evening of Friday the 16th we will open the doors to offer a chance to preview these sale lots, meet and greet the workshop tutors and of course enjoy some sneaky nibbles and a cocktail or two.

And never fear... he's back... Brett Kaysen will be on hand once again to liven things up and amongst other things participate in the weekends workshops!



The Alpaca Stud was founded in 2005 with the objective of becoming a source of “Gold Standard” world genetics. Ten years on and 2015 saw a lot of change at the Alpaca Stud with James Corrigan-Stuart joining Nick Harrington-Smith as co-owner but it is 2016 which has heralded the most exciting and important change of all – a move of farm. This move will place The Alpaca

Stud at the stunning Yeat Wood Farm in Buckinghamshire with its easy access to the M40 and close proximity to Oxford. This central location allows us to better serve the needs of our existing friends and clients and hopefully open the doors for others.

Part of our strength is the level of expertise we offer clients. In 2014, our daughter Alexandra and her husband Dries Verhoef joined the team. This addition of knowledge, some of which was gained outside of the UK, makes The Alpaca Stud a source of expertise that few can match, and can but give client’s confidence.

Our herd improvement programme was founded on the now highly renowned Dovecote Jaquinto who formed the cornerstone of the Huacaya breeding programme. We continue to add genetics, and in 2010 and 2013 we introduced males from the famous Snowmass herd in North America. These new herdsires complemented and enhanced the existing Huacaya bloodlines, adding such names to pedigrees as Snowmass’s Quechua, Matrix, Conopa, and the great Legacy himself. For the Suri programme, The Synergist was added, a grandson of the famous MacGyver from Great Lakes Ranch. The 2016 breeding programme was one of our most exciting yet with fresh coloured genetics from Australia at play as well as home grown young guns such as Alpaca Stud Canute, Top Gun and Yves Jacques giving us proof of why they joined the working male ranks in 2015! Of course our home grown superstars continue to dominate including Nyetimber, Phoenix and Fusion who have all been crowned British Alpaca Futurity Herdsire Champions. As home to numerous British Alpaca Futurity Herdsire Championships, we can be confident of the prepotency of our Herdsires.

The Alpaca Stud’s commitment to the British fibre industry remains undiminished, our Huacaya fibre is still much sought after for its consistency and high quality, and we are now grading Suri with a view to its processing on a commercial scale in the UK.

A keen participant on the show circuit we value the exposure this creates for our clients and ourselves. We have enjoyed tremendous show successes, in both Huacaya and Suri. Our clients now enjoy their own success in the show ring, and we thank them for their continued support of both the British industry and ourselves.

The Alpaca Stud Objective:

To breed alpacas that represent the breed type at its best, be that Suri or Huacaya. Our alpacas must be of the highest quality, with good health, sound conformation and genetically predisposed towards heavy cutting weights and longevity of fine fibre production, often described as “genetic fineness”. Alpacas bred for COMMERCIAL fibre production, not just the show ring.

Once again, we are offering some of our very best alpacas in this year’s auction, with enviable pedigrees thrown in for good measure. As proud co-hosts of the event, we do hope you enjoy the opportunity, as we will enjoy welcoming you to Yeat Wood Farm, the new home of The Alpaca Stud and those genetics that represent the future for our clients and ourselves.



“Bozedown Alpacas” is a name synonymous with highest quality, reliability and support, ensuring that our customers return time and again.

We are genuinely enthusiastic about the alpacas we breed and sell. Our business is built on providing the best possible advice and service to our customers, supported by a wealth of World Class genetics. We supply prizewinning breeding stock to many other highly successful alpaca breeders throughout Europe.

Bozedown has amassed a wealth of knowledge with over 27 years experience in the alpaca industry, which we are always keen to share. We offer a comprehensive range of services, such as stud services, livery, consultancy, and a range of courses, along with a wide range of prize-winning Suri and Huacaya genetics for sale with comprehensive back-up.

Joy Whitehead bought 5 alpacas in 1989, and Bozedown Alpacas was born. Niece Mary-Jo Smith joined her in 2000, and together they have proved a strong team in selection and breeding of both huacaya and suri alpacas. Now with more than 800 Alpacas, Bozedown Alpacas has won a phenomenal number of Champion and Supreme Champion alpacas and other show successes over the years. Bozedown takes pride in having been the prime mover in advancing the general quality of alpacas in the UK and Europe, primarily through Joy’s landmark first Peruvian selection of 1998.

Outstanding genetics have been imported since 2000 from the renowned Jolimont herd in Australia, and so we have some key genetics from Australia as building blocks in our Bozedown pedigrees, e.g. renowned Jolimont Sculptor and Jolimont Conquistador among others. More recently Herdsires Jolimont Reagan and Jolimont Rodrigo have made a valuable contribution, and premium pedigrees from Magical Farms in the USA have added further potency to our breeding lines. Our home-bred Champion Machos such as Huacayas Revel, Omen, Code Breaker, Bourbon, Achilles, Comet II, Frisbee, Ascendant, Neo and Tonto, and Suris Idaho, Milo II, Singapore, Bandit, Ransom, Stargazer and Joust are currently cementing our very strongly established pedigrees.

Bozedown Alpacas Objective:

Our breeding aim is to build improvement into each successive generation for each and every alpaca on the farm!! We produce healthy strong-framed huacayas and suris with excellent conformation and advanced fleece types, and concentrate our breeding aims on further advancements in fleece fineness and fleece weights to satisfy our strongly growing UK fibre industry.

The Alpaca Classic auction includes some of the very best breeding ever produced at Bozedown Alpacas - just look at the champion pedigrees on offer! - so this is your opportunity to make our success your success, by including more of Bozedown’s outstanding genetics in your breeding programme. In 2016, after 27 years in the business, we proudly present the fifth Alpaca Classic Event.

GUEST SPEAKERS



Brett Kaysen has been an influence in the Alpaca Community on many levels since 2001. He has travelled coast to coast in North America as well as internationally teaching seminars on alpacas consisting of classroom presentations and hands on workshops. Brett has a passion for educating, especially in the area of Animal Science. Brett was raised east of Brighton, Colorado where he was always involved with every aspect of raising livestock.



Sarah Riley is a consultant, trainer and independent Glamping industry expert. She is also the founder of the internationally acclaimed 'Ultimate Glamping Business Guide', helping new businesses launch their ideas quickly and jump ahead of the competition. If you would like to schedule a time to speak to Sarah during the Classic please email hello@inspiredcourses.com



An alpaca breeder for 6 years, **Harvey Brown** has worked for over 15 years as a highly regarded freelance photographer, working for businesses big and small as well as some of the most well established fashion brands, top high street names and a plethora of quality magazines and books, including Marks & Spencers, Next, Vidal Sassoon, Schwarzkopf, Cosmopolitan, Maxim, GQ and BHS.



Claire E Whitehead BVM&S MS FHEA MRCVS
Diplomate ACVIM (Large Animal)
RCVS Recognised Specialist in Camelid Health & Production
Claire graduated as a vet from Edinburgh in 1999. She completed a Residency in Large Animal Internal Medicine at The Ohio State University in July 2005. After a further year at Ohio State as a clinical instructor in Camelid Medicine and Reproduction, she returned to the UK in 2007 where she established the first referral service catering specifically for Camelids alongside other farm animals at The Royal Veterinary College. In May 2011, she set up in private practice running a camelid-only referral and consultancy practice and runs courses for vets and owners/breeders on Camelid Health and Reproduction.

SEMINARS

Inspired Courses and Inspired Camping by Sarah Riley

In partnership with Inspired Camping the 'Ultimate Glamping Business Guide' has been developed as an online course with explanation videos and detailed information to support learners through every step of the process, releasing some very profitable trade secrets while helping new businesses to thrive. So if you are looking to expand your existing business or augment it through any sort of diversification, book in and see what gems Sarah has to offer! For anyone looking to diversify or augment their alpaca business this seminar is a must!

'How EBVs progressed the cattle industry' by Brett Kayson

Hear from Brett his thoughts on how EBVs have shaped the cattle industry today.

WORKSHOPS

WORKSHOP 1 – Move your business forward through better photography by Harvey Brown

Poor photography is a major reason for any business' marketing efforts to fail to deliver a return. Harvey will show and discuss the issues behind effective business photography and look at examples of images that work and analyse those that don't.

He will discuss why photography is relevant to sales, how to identify the photographic needs of your business and planning a shoot, as well as practical demonstrations to improve your understanding of photography, technique and top professional tips.

WORKSHOP 2 – Brett Kaysen on Form & Function

A hands on workshop looking at form and function to include practical, fun and interactive elements.

WORKSHOP 3 –Spotting Sick Alpacas Simply! Claire Whitehead

This workshop will include a look at parasite management and observation. You will also leave the Classic equipped with simple hands on tools to give you useful 'quick' assessments you can make of animal health and know when your action or veterinary intervention is required.

WORKSHOP 4 – Mary-Jo Smith & Alex Verhoef

Learning how to analyse and critique your own fibre. A hands on practical workshop.

WORKSHOP 5 – Nick Harrington-Smith

How to avoid single trait selection/trait weighting for breeding. A hands on practical workshop.

TRADE STANDS

UK Alpaca www.ukalpaca.com

Marshwood Vale Handling Equipment www.marshwood-alpacas.co.uk

Camelid Veterinary Services www.ukalpacavet.com

Welcome to

THE ALPACA CLASSIC 2016 ÉLITE AUCTION & PEN SALE

An important sale of Élite Quality British Breeding Stock

Comprising:

Huacaya Pregnant Females

Suri Pregnant Females

Maidens

Stud Males

September 17th & 18th 2016

Viewing opens at 11:30 am

Preview Friday 16th at 7:00 pm

Auction Commences at 6:30 pm

Guest Auctioneer:

Brett Kaysen

Sale Date Contacts for phone Bidding:

Mary-Jo Smith (Bozdown Alpacas) 0771 875 0303

Nick Harrington-Smith (The Alpaca Stud) 07979 651742

IMPORTANT NOTICE TO PROSPECTIVE PURCHASERS

Settlement & Clearance of Stock

Please note that all lots must be settled on the day of purchase.

A system of "Buyers Numbers" will operate at this sale.

Potential buyers must register with the sales team before the sale commences.

Telephone Bidders Welcome; please register with 07718 750303 or 07979 651742 prior to sale.

Carry the number with you and make sure it is obvious when purchasing.

No Lots can leave the sale centre without a 'pass slip' being issued by the sales office.

Invoices will be raised in pounds sterling.

We request that payment is made to us in pounds sterling by cheque / Bankers draft on the day of sale

Finance is available for all purchases, at 0% interest.

If you are interested in finance, please discuss this with the Vendors before bidding.

GENERAL INFORMATION AND SALE NOTES

Location: The Sale will be held at Yeat Wood Farm, Wooton Underwood, Aylesbury, Bucks HP18 0RL

Inspection: The Sale stock will be available for inspection by arrangement at Bozedown Alpacas or The Alpaca Stud prior to sale or at Yeat Wood Farm on the day of the sale.

Hotels: There are many hotels in the area; however, we are recommending Holiday Inn Aylesbury. Please see page 2 for further details.

Insurance: Purchasers are strongly recommended to insure their animals, and Armitage Insurance have kindly sponsored 48 hours insurance from the fall of the hammer for all purchased alpacas. We recommend contacting Jacinta (of Armitage) either on the day of sale, or on the Monday morning following the sale to extend cover.

Conditions of Sale & Warranties:

Any female sold as scanned pregnant and rejecting the male, which does not produce a live cria (alive for less than 48 hours) during 2017, can be returned to vendor (at the purchaser's expense) to be re-bred. This guarantee is for the benefit of the purchaser only and is non-transferable to a third party. The same or equivalent Stud male to that specified in the catalogue will cover any female needing re-mating.

All alpacas will have a valid health certificate completed prior to sale date.

Health Certificates will be provided prior to collection.

All Alpacas are sold as seen, with health certificate available for inspection.

For those clients purchasing single alpacas and who do not currently have other alpacas, the Vendor will provide: Free Livery for 4 weeks PLUS a selection of pet males and/or other females for sale as companion animals.

This Sale will also be subject to the rules and regulations of the Livestock Auctioneers Association where applicable.

Method of Sale: All stock (including Pen Auction) will be sold in guineas (105 pence) plus VAT

Breeders Choice Lots - Alpacas to be selected by 16:00 on September 18th 2016.

Lot 10 Bozedown Alpacas - Breeders Selection Sweet Sixteen - A list of the 16 females will be available on the Alpaca Classic website from the 1st of September.

The purchaser must make their selection by the end of September 2016.

Payment and Stock Clearance: Payment of stock is to be made either by banker's draft or certified cheque and clearance can only be effected after confirmation of payment. Settlement in full is due immediately at the close of Sale unless otherwise agreed. No animal may leave the Sale Premises without an official 'Pass Slip', obtainable only from the sales desk upon settlement. All Alpacas are at Purchasers' risk.

Commissions: The Auctioneer will dutifully execute commissions to purchase for buyers unable to attend the sale personally, upon receipt of written instructions. Mobile telephone bidding can be considered by prior arrangement.

Registrations & Transfers: All adult animals are registered with the British Alpaca Society (BAS). All crias sold at foot will be registered by the vendor after the sale. All transfers will be paid by the vendors.

Export Sales: All alpacas sold at auction to breeders from outside of the UK can stay on the vendors farm for 4 weeks with free livery, unless otherwise agreed with vendor. The cost of export testing and certification will be borne by the purchaser.

Refreshments: Available throughout the day.

TERMS AND CONDITIONS OF SALE

1. The bidding to be regulated by the Auctioneers and the highest bidder, subject to the Vendors reserve (if any), to be the purchaser. No bid shall be retracted and if any dispute should arise between two or more bidders, the Lot in dispute shall be put up again and resold, or the Auctioneers may determine the dispute at their own discretion and their decision shall be final. The Auctioneers reserve the right to refuse the bid of any person without being called upon to give reason for such action.
2. The Purchaser to give his full name and dwelling place and pay for all Lots immediately at the close of sale. No Lot or Lots shall be removed from the sale premises until paid for and a pass-out slip obtained from the Auctioneer's clerk but each and every Lot shall immediately at the fall of the hammer be considered as delivered and be and remain in every respect at the absolute risk and expense of the respective purchaser or purchasers thereof and shall be removed from the sale premises at the purchaser's expense. The right of property shall not pass until the full purchase price is paid.
3. Purchasers paying by cheque must be prepared, if required, to produce a banker's reference. As a result of the Money Laundering Regulations (2003) the auctioneers are unable to accept cash payments in excess of nine thousand pounds sterling (£9,000.00) for any single or linked purchase transaction.
4. All statements in the catalogue, or made by the Auctioneer at the time of sale, also the correct identification of the animals, are the entire responsibility of the Vendors. The Auctioneers take no personal responsibility for the correctness of such statements or identities.
5. All statements in the catalogue, or any made by the Auctioneers at the time of sale, relating to any veterinary or other tests are to be taken as statements to the best of the vendor's knowledge. No such statements shall guarantee the purchaser of any animal against loss arising from the subsequent reaction of such animal to any test administered after the sale and the Vendors shall not be liable in any way should this occur.
6. Neither the Vendors nor the Auctioneers will be responsible for any accident or injury to persons or property, through fire or any other cause whatsoever, nor for any damage by animals prior to, during or after the sale.
7. No undertaking by the Auctioneers or their servants to take charge of any Lot or Lots after the sale or to forward them to their destination shall be held to impose upon the Auctioneers any legal obligation or vitiate any of these Conditions.
8. Inasmuch as the Auctioneers act as agents for a disclosed principal they shall not be considered personally responsible for any default on the part of either purchasers or Vendors and the remedy shall be against them only and not against the Auctioneers.
9. If these conditions are unfulfilled, the Vendors or Auctioneers shall have the power to resell the Lots, retaining any surplus and charging any deficiency and expense to the defaulter.
10. Substitution of lots: The vendors reserve the right to substitute alternative lots for health, condition or other reasons.

ROSTRUM AUCTION AND PEN SALE

The fifth Alpaca Classic: There is to be an offering of 10 lots in a traditional auction conducted from the rostrum by Brett Kaysen for those of you that enjoy the thrill of the chase. In this part of the sale there will be the "Breeders Choice" lots being offered by both the Alpaca Stud and Bozedown Alpacas. As in previous years, Bozedown Alpacas will also be offering their Breeder's Selection Lot, offering a free choice from 16 exceptional yearling females, which will all be available for viewing at the Event. Then, in addition, we are offering a number of alpacas in a "Pen Auction", which will cater for those who prefer to make their choices in a more relaxed atmosphere. Whilst all alpacas are to be sold with the same warranty as set out in the Terms and Conditions of sale, the Pen Auction will have some opportunity for discrete competition, and offers a varied range of alpacas designed to meet a broad spectrum of breeders' needs and budgets.

All alpacas are available for inspection from Friday evening and throughout the weekend, with the auction scheduled for 6:30pm on Saturday. The Pen Auction however will go live on September 9th and will run until the close of Sunday the 18th, with all offerings closed by 3:00pm on Sunday. If you would like to get a jump start all alpacas can be viewed at prospective farms by arrangement prior to the event. To avoid any misunderstanding, the framework for this part of the weekend is set out below.

PEN AUCTION:

- Buyers will register with the sale office and receive a "bidders" number.
- Offers can be made either in person via the sale office, by written offer or via e-mail or text. No bid will be valid unless the bidders number is included in any such offer.
- There are to be three quality/price groups from each host farm.
- All alpacas will have a reserve price posted.
- All alpacas will have a "Buy Now" price.
- The "Buy Now" price will be only available until 8:30 pm Saturday Sept 17th, 2016.
- If the Buy Now price is not taken by the scheduled time, the Pen Auction will run until the scheduled Sale Closed time.
- At the scheduled Close the bidder making the highest offer will be the purchaser, provided that the reserve price has been met.
- Full descriptions will be available on the website www.alpacaevent.co.uk.

EXAMPLE:

- Alpaca A is reserved at £3999. The "Buy Now" price is £4500, available until 8:30pm on Saturday. Buyer X offers the "Buy Now" price of £4500 at 12:15pm on Saturday and secures the purchase. Alpaca A is no longer available.
- Alpaca B is reserved at £4500. The "Buy Now" price is £5000, available until 8:30pm on Saturday. Buyer X has bid £4900 at 1:25pm on Saturday. The Buy Now time passes with no further offers until Buyer Z offers £5000 at 2:45pm on Sunday. The "Buy Now" time having passed this offer does not secure the purchase; two other bids are made with Buyer Z securing the purchase with his last bid of £5600 made at 4:25pm.
- Alpaca C is reserved at £4500. The "Buy Now" price is £5500, available until 8:30pm on Saturday. Buyer Y offers the reserve price of £4500 at 10:30am on Sunday; no further offers are received by 2:30pm. Buyer Y secures the purchase with the reserve price of £4500.

BOZEDOWN AND
THE ALPACA STUD
INVITE YOU TO JOIN THEM
ON SEPTEMBER 16TH 2016 FOR

COCKTAILS WITH THE COWBOY



The evening includes a seminar with the cowboy himself Brett Kaysen
'How EBVs progressed the Cattle Industry'.

Further to this there will be a preview of
all the Alpacas offered for sale at
The 2016 Alpaca Classic!

So join us and the cowboy for some
education, some Alpacas and refreshments at
Yeat Wood Farm, Wotton Underwood, Bucks
between 7pm and 9pm on the 16th!

LOT I

ALPACA STUD I.K. MARIE THERESA (B96)

DOB: 2nd of June 2012

Colour: Solid Dark Fawn Huacaya

UKBAS21611

ggs: Snowmass Royal Rose (MF) USA/R807337

gs: Snowmass Xxxxxtreme (MBR) USA/R830297

ggd: 5Peruvina Harley (MF) USA/R800556

Sire: Snowmass Incan King XXX of AUK (DF) UKBAS12873

ggs: Snowmass Andean Bronze (LBR) USA/R807419

gd: Snowmass Royal Highness (MBR) USA/R840852

ggd: 5Peruvian Cangalli (Grey) USA/R800592

gs: Canadian Male

Dam: Alpaca Stud Helina (MF) UKBCL15064

gd: Canadian Female

Mated to: Snowmass Roll of Honour

LMD: 13th of June 2016

Show Results:

2014 Alpaca Showtime Intermediate Fawn Female – 2nd

2014 South of England Intermediate Fawn Female – 1st and Reserve Champion

Fleece Stats:

2013: 19.1m, SD 3.6, CV 18.8, CF 98.8%

2016: 18.3m, SD 3.8, CV 20.8, CF 99.2%

Marie Theresa is a daughter of the renowned and much missed Snowmass Incan King. This will likely be the last of the Incan King daughters we release for sale so make sure you take advantage and snap her up today. We have paired Marie with Snowmass Roll of Honour who has shown himself to be the perfect next step with our Incan King girls, in fact it was the pairing of Incan King and Roll of Honour genetics that produced the 2016 Heart of England Champion Brown Male. Marie's fleece stats are sure to impress, as is the degree of style she exhibits. In addition to this her stature and presence are second to none.





LOT 2

BOZEDOWN ACAPELLA (3185)

DOB: June 10th, 2014

Colour: Solid White Huacaya

UKBAS27043

gs. Jolimont Rodrigo II of Bozedown (SW)

Sire: Bozedown Escapade (SW)

gggs. Jol. Conquistador (SW)

ggs. Bozedown Viscount (SW)

gggd. Jol. Petulia BOZ (SW)

gd. Bozedown Ivy (SW)

ggd. Annabelle BOZ (SW)

ggs. Jol. Prince Charming BOZ (SW)

gs. Bozedown Hansel (SW)

ggd. Anthea BOZ (SW)

Dam: Bozedown Rouge (SBG)

gd. Joana of Bozedown (SW)

Mated to: Bozedown Ascendant (SBG)

LMD: June 23rd, 2016

Show Result:

2016 South of England: Champion White Female

2016 South of England: Best of British Huacaya

2015 Alpaca Showtime: 3rd Intermediate Female

Fleece Stats:

2015: 16.3m, SD 3.7, CV 22.8, CF 100%

2016: 18.7m, SD 4.2, CV 22.2, CF 98.5%

Bozedown Acapella has great depth to her pedigree, with many great names appearing there: such names as Bozedown Escapade, Jolimont Rodrigo, Bozedown Viscount, Jolimont Conquistador, Joana of Bozedown and Anthea of Bozedown. These powerful genetics make this female a valuable addition to an elite breeding programme.

Acapella's sire Escapade is an in-house male, and so the only way to acquire his genetics is to buy pregnant females sired by him, or to purchase his progeny. Don't miss this opportunity to secure Escapade's genetics. Acapella has been covered by Bozedown Ascendant, a multi-champion light male. Ascendant's progeny are all like their sire, with solid frames and great bone, along with zinging brightness and length; so, couple that with Acapella's strengths of soft handle, density and fineness, and we have the recipe for a very special cria in 2017!

LOT 3

ALPACA STUD HELTER SKELTER (D59)

DOB: 29th of May 2014

Colour: Solid Mid Brown Suri

UKBAS25619

gs: Aurora Borealis of Arunvale (DF) UKARUBASP0722

Sire: Alpaca Stud Phoenix (RG) UKBAS04390

ggs: Nafuna (W) UKARUBASP0016

gd: Inca Adriam (LF) UKARUBASP0417

ggd: Miniya (MF) UKARUBASP0017

ggs: Aymara Dream (DF) UKARUBASP0010

gs: Atardeca (DBR) UKBAS01078

ggd: Helaku (W) UKARUBASP0372

Dam: Alpaca Stud Sarasa I (MBR) UKBAS09040

ggs: Sword (MF) UKARUBASP0047

gd: Suri Sword Sarasa (LF) UKBAS0983

ggd: Alana (W) UKARUBASP0285

Mated to: Alpaca Stud Eliminator

LMD: 11th of July 2016

Show Results:

2014 British Alpaca Futurity Junior Brown Female – 3rd

Fleece Stats:

2016: 19.6m, SD 4.6, CV 23.5, CF 97.3%

A stunning brown Suri with plenty of clout to her pedigree. Her sire needs little introduction; Alpaca Stud Phoenix is one of the most noteworthy grey suris in Europe. Her dam is one of the Alpaca Studs most respected blue blood suris having produced noteworthy offspring such as Saraswati and Rosalie, and heralds from the same lines as Arunvale Shasa, one of the UK's most noted Suri males who was still winning first place ribbons in National fleece competitions when approaching the age of 12. This is a heavyweight suri line that would advantage any Suri breeders herd. Helter Skelter is now pregnant to Alpaca Stud Eliminator, son of Synergist and winner of multiple broad ribbons.



LOT 4: BREEDERS CHOICE - FEMALES

This lot containing 2 females is presented to you so that you may have the final choice of the alpaca you would "most like to take home" from the pair. We are confident that both alpacas presented offer tremendous scope within any breeding programme, yet offer enough

subtle differences to be attractive to a broad selection of breeders. We wish you well in your deliberations, as we couldn't split them!



BOZEDOWN DREAM CATCHER (3219)

DOB: May 24th, 2014

Colour: Rose Grey Huacaya

UKBAS27306

gs: The Chief of Bozedown (DG)

Sire: Bozedown Lone Wolf (MG)

gd: Esperanza of Bozedown (MG)

Dam: Janice of Bozedown (RG)

Mated to: Bozedown Bourbon (SMBR)

LMD: June 1st, 2016

Fleece Stats:

2015: 20.5m, SD 4.6, CV 22.6, CF 97.5%

2016: 21.2m, SD 4.6, CV 21.6, CF 96.6%

Bozedown Dream Catcher is a beautifully well grown maiden female, sired by Bozedown Lone Wolf. Dream Catcher's fleece is an incredibly uniform rose grey colour, and she carries a well defined crimp style with a lovely brightness and soft handle, indicative of her fleece fineness. Dream Catcher has been covered by Bozedown Bourbon who, although brown himself, has been reliably producing incredibly finely fleeced progeny, including a Champion Grey female. Bourbon has been mated to 9 grey females and has produced 7 grey progeny from these females.

LOT 4: BREEDERS CHOICE - FEMALES

BOZEDOWN APACHE (1815)

DOB: May 22nd, 2008

Colour: Light Grey Huacaya

UKBAS11601

Sire: The Chief of Bozedown (DG)

Dam: Esperanza of Bozedown (MG)

Mated to: Bozedown Legacy (RG)

LMD: July 21st, 2016

SILVER GREY MALE CRIA AT FOOT

DOB: July 3rd, 2016

Sire: Alpaca Stud Nyetimber (RG)

Show Results:

2009 South of England: Champion Grey Female

2009 SWAG: Champion Grey Female

2009 British Alpaca Futurity: Reserve Champion Grey Female

2009 British Alpaca Futurity: 1st Junior Grey Female

Fleece Stats:

2009: 16.6m, SD 4.0, CV 21.3,

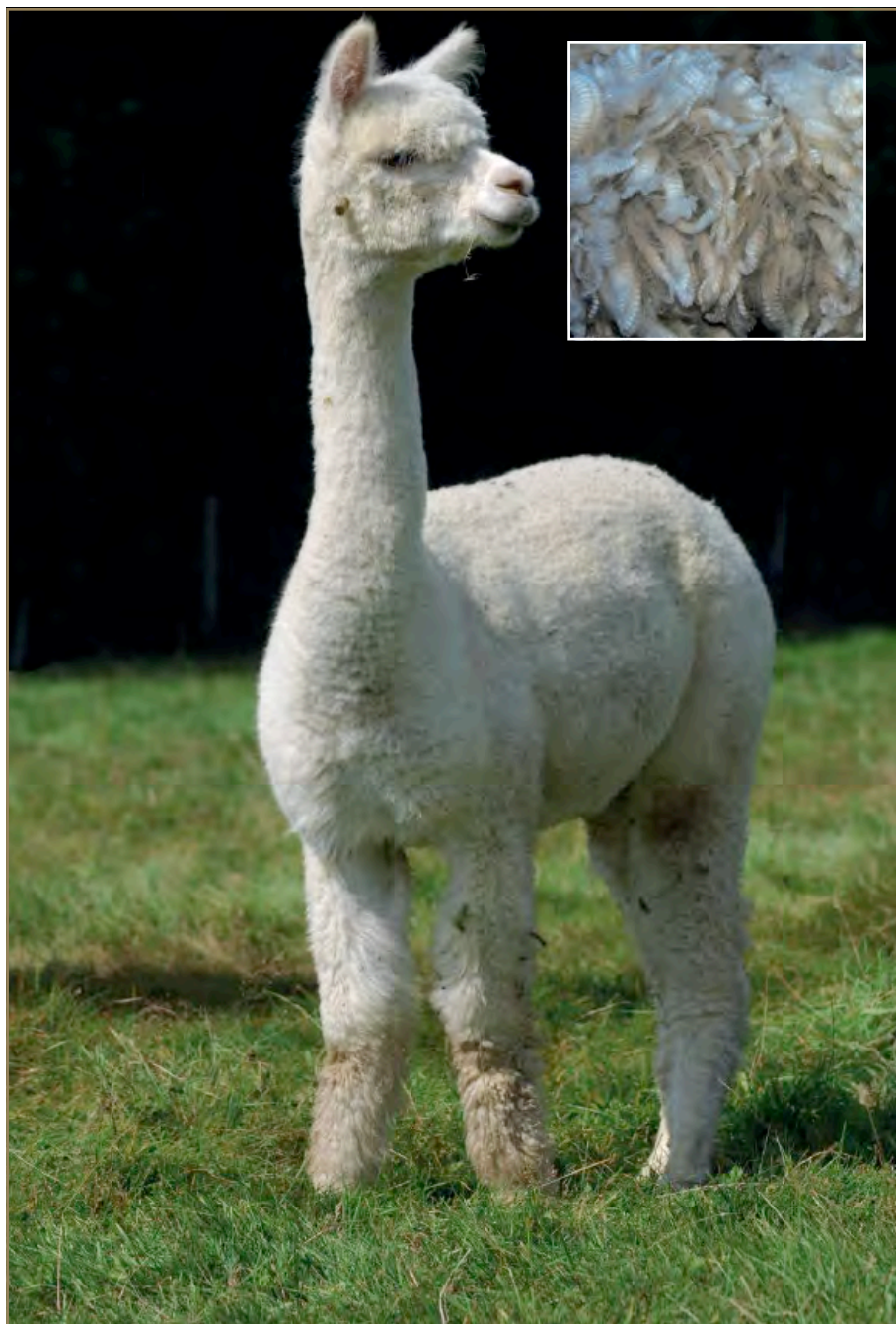
2011: 18.0m, SD 3.3, CV 18.6, CF 99.8%

2013: 18.8m, SD 4.0, CV 21.3, CF 99.4%

2016: 24.0m, SD 5.0, CV 21.0, CF 89.7%

Bozedown Apache is a beautiful daughter of The Chief of Bozedown and she has inherited both her dam's and her sire's buttery soft fleece. Apache has had excellent show results and has a stunning young male at foot sired by the legendary Alpaca Stud Nyetimber - a great combination! This year she has been mated to Bozedown Legacy, a young Champion Stud male in his first breeding season.





LOT 5

ALPACA STUD I.E. PHILADELPHIA (D134)

DOB: 27th of June 2014

Colour: Solid White Huacaya

UKBAS25949

gggs: 4Peruvian Legacy USA/R166559

ggs: Snowmass Legacy Gold (MF) USA/R807333

gggd: Neve's Lua (DBR) USARI80086

gs: Snowmass Invincible (W) USA/R830226

gggs: Peruvian Hemingway (W) USA/R117888

ggd: Snowmass Maree Love (W) USA/R803117

gggd: Peruvian Lace (W) USA/R80978

Sire: Snowmass Invincibly Elite XX of AUK (W) UKBAS12871

gggs: Peruvian Hemingway (W) USA/R117888

ggs: Snowmass Royal Rose (MF) USA/R807337

gggd: Snowmass Rose Pearl (MB) USA/R175525

gd: Snowmass Sweet Serenity (MF) USA/R807337

ggd: 6Peruvian Gold Serenity (MF) USA/R808427

ggs: ARI WRA Peruvian Nekuta (ARI4) - (S)W

gs: Alpaca Stud Antonio (W) UKBCLI5083

ggd: ARI WRA Lambchops (ARI10) - (S)W

Dam: AUK Cotillion (SW) UKBAS09039

ggs: Dream Incarnation (P67) - (S)W UKARUBASP0067

gd: Satinka (p483) - (S)W

ggd: Inca Helen (PI61) - (S)W UKARUBASP0161

Mated to: Alpaca Stud Yves Jacques

LMD: 1st of June 2016

Scanned Pregnant

Fleece Stats:

2016: 17.2m, SD 4.1, CV 23.8, CF 100%

With Philadelphia it is all about the fleece, as it should be when talking Alpacas. The minute this fleece hit the skirting table our resolve to offer her at The 2016 Alpaca Classic wobbled... simply stunning. She has a bright and soft handling fleece with stunning crimp style. Hers is a strong pedigree with Snowmass Invincibly Elite as her sire and Alpaca Stud Antonio on her dam's side. Philadelphia is now pregnant to Yves Jacques who is equally in stylish and stunning. A great combination of elite white genetics, the result of which is sure to please.

LOT 6

BOZEDOWN COVER GIRL (3298)

DOB: July 16th, 2014

Colour: Solid Mid Fawn Huacaya

UKBAS25574

gs. Trojan of Bozdown (SLF)

Sire: Bozdown Achilles (SLF)

ggs. Galaxy BOZ (SW)

gd. Bozdown Sahara (SLF)

ggd. Jol. Memory BOZ (SLF)

gs. Sun King of Bozdown (SMF)

Dam: Bozdown Cappuccino II (SLF)

gd. Brionna of Bozdown (SMF)

Mated to: Bozdown Neo (SLF)

LMD: August 12th, 2016

Show Results:

2015 BAS National Halter Show: 1st Junior Light Female

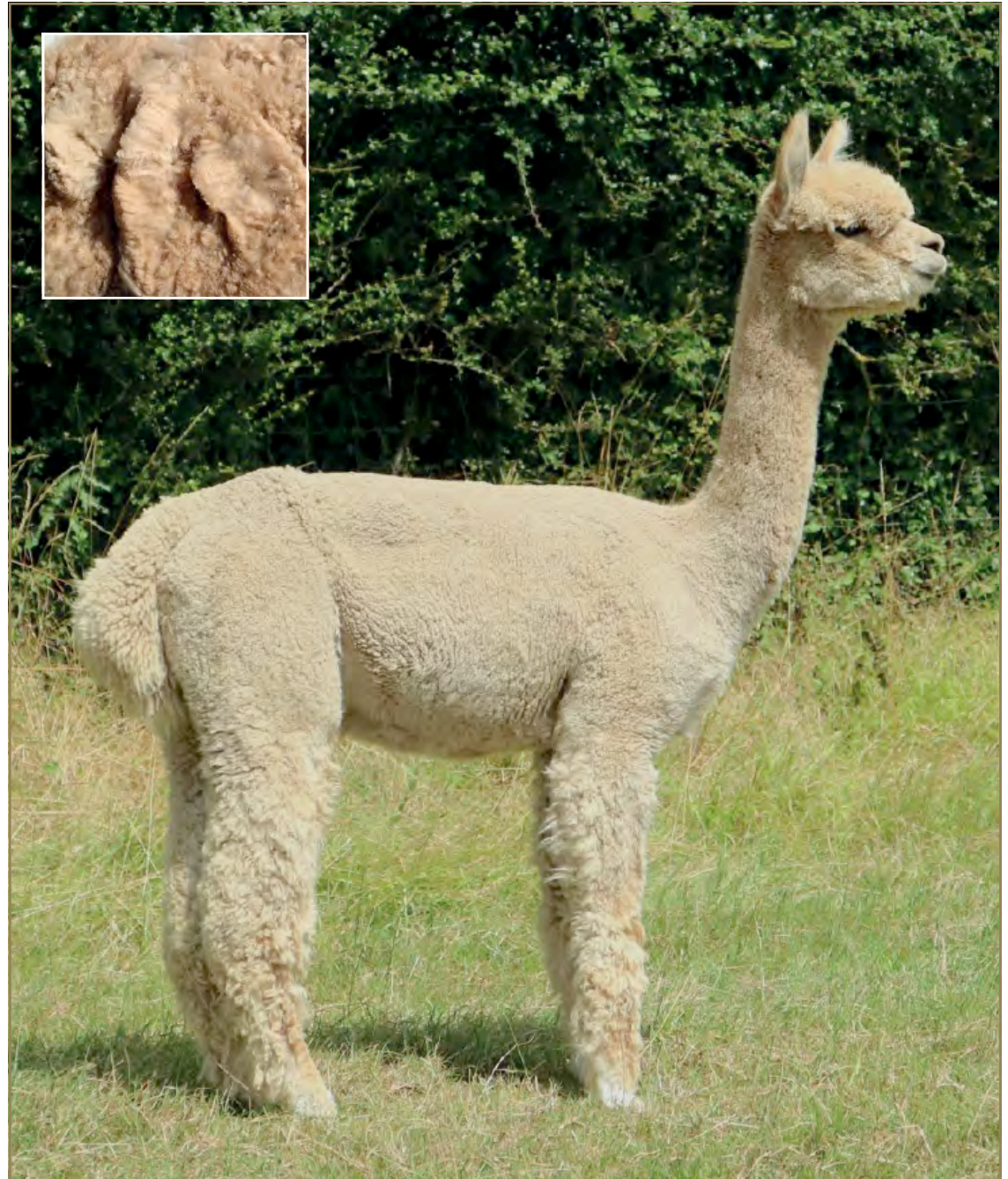
Fleece Stats:

2015: 15.0m, SD 3.0, CV 20.0, CF 100%

2016: 15.3m, SD 3.0, CV 19.9, CF 100%

Are you looking for residual fineness in a breeding female? Aren't we all? Then Bozdown Cover Girl is just the female for you. Her sire Bozdown Achilles is known for his superfine progeny and Cover Girl is no exception, with her second fleece maintaining 15 microns. Achilles' 5th fleece was still only 18 microns. Cover Girl is carrying the progeny of Bozdown Neo who was the Judge's Choice at the 2016 National Fleece show; this was his 2nd fleece (2015), which tested at 15.9 microns with an outstanding SD of 2.5! Can't wait to see what these two will produce!

This is a very special offering of a beautiful Achilles daughter with a wonderfully uniform fleece colour, and with abundance of style and brightness on a compact frame. Add to all that her extreme fineness, which just puts the icing on the cake.



LOT 7: BREEDERS CHOICE

This lot containing 2 females is presented to you so that you may have the final choice of the alpaca you would “most like to take home” from the pair. We are confident that both alpacas presented offer tremendous scope within any breeding programme, yet offer enough subtle differences to be attractive to a broad selection of breeders. We wish you well in your deliberations, as we couldn't split them!



ALPACA STUD P.S. ROMANY SKIES (E41)

DOB: 26th of May 2015

Colour: Dark Fawn

UKBAS28009

ggs: USA/830258 Snowmass Infinity (SW)

gs: USA/30339231 – Snowmass Conopa XXX (MF)

ggd: USA/840857 Snowmass Simply Scrumptious (DF)

Sire: Snowmass Puna Sky of AUK (SLBR) UKBAS18753

gggs: USA/R807337 Snowmass Royal Rose (MF)

ggs: USA/R830297 Snowmass Xxtreme (MBR)

gggd: USA/R800556 5Peruvian Harley 8524 (MF)

gd: USA/R30424920 Snowmass Xxtremely Secret (MBR)

gggs: USA/R815614 Snowmass Nova (Blk)

ggd: USA/R850394 Snowmass Nova's Secret (DBR)

gggd: CAN/R833505 Chima (Blk)

gggs: Pperuvian Vengador USA/I23063

ggs: DLA Pastoro CAN/I5893

gggd: Pperuvian Puka Pollera (SF) CAN/I3022

gs: Dovecote Jaquinto of Alpaca Stud (SW) UKBCL15085

gggs: Peruvian Alianza Del Monte (SF) CAN/I9383

ggd: Okanagan's Jolene CAN/21787

gggd: Oacl Jo-Jo (SF) CAN/I8896

Dam: Alpaca Stud Gypsy UKBAS20048

gd: Inca Incarnation (SW) UKARUBASP0416

Show Results:

2016 BAS National Show Junior Fawn Female – 2nd

2016 South of England Show Junior Fawn Female – 1st

2016 South of England Show Champion Fawn Female

Fleece Stats:

2016: 17.6m, SD 4.2, CV 24, CF 99.7%

Romany Skies is a beautiful, compact female who is a sure to bring her owner success. She has an impressive pedigree including notable sires Snowmass Puna Sky and Dovecote Jaquinto. This young huacaya just packs on the fleece displaying an enviable staple length. The fleece is dense, soft handling and bursting with style. Romany Skies placed second in a competitive National Show this year and went on to receive Champion Fawn at the well-attended South of England Show.

LOT 7: BREEDERS CHOICE

ALPACA STUD P.S. RED SKIES (E49)

DOB: 28th of May 2015

Colour: Solid Dark Fawn

UKBAS28012

ggs: USA/830258 Snowmass Infinity (SW)

gs: USA/30339231 – Snowmass Conopa XXX (MF)

ggd: USA/840857 Snowmass Simply Scrumptious (DF)

Sire: Snowmass Puna Sky of AUK (SLBR) UKBAS18753

gggs: USA/R807337 Snowmass Royal Rose (MF)

ggs: USA/R830297 Snowmass Xxtreme (MBR)

gggd: USA/R800556 5Peruvian Harley 8524 (MF)

gd: USA/R30424920 Snowmass Xxtremely Secret (MBR)

gggs: USA/R815614 Snowmass Nova (Blk)

ggd: USA/R850394 Snowmass Nova's Secret (DBR)

gggd: CAN/R833505 Chima (Blk)

ggggs: Pperuvian Vengador USA/I23063

gggs: DLA Pastoro CAN/I5893

ggggd: Pperuvian Puka Pollera (SF) CAN/I3022

ggs: Dovecote Jaquinto of Alpaca Stud (SW) UKBCL15085

ggggs: Peruvian Alianza Del Monte (SF) CAN/I9383

gggd: Okanagan's Jolene CAN/21787

ggggd: Oacl Jo-Jo (SF) CAN/I8896

gs: Alpacas Stud Chandon (LF) UKBAS21606

ggd: Inca Haze (W) UKARUBASP0030

Dam: Alpaca Stud Sunset UKBAS21606

ggs: Inca Amour (SDF) UKARUBASP0007

gd: Inca Indian Dream (SDF) UKARUBASP0585

ggd: Inca Daisy (SLBR) UKARUBASP0011

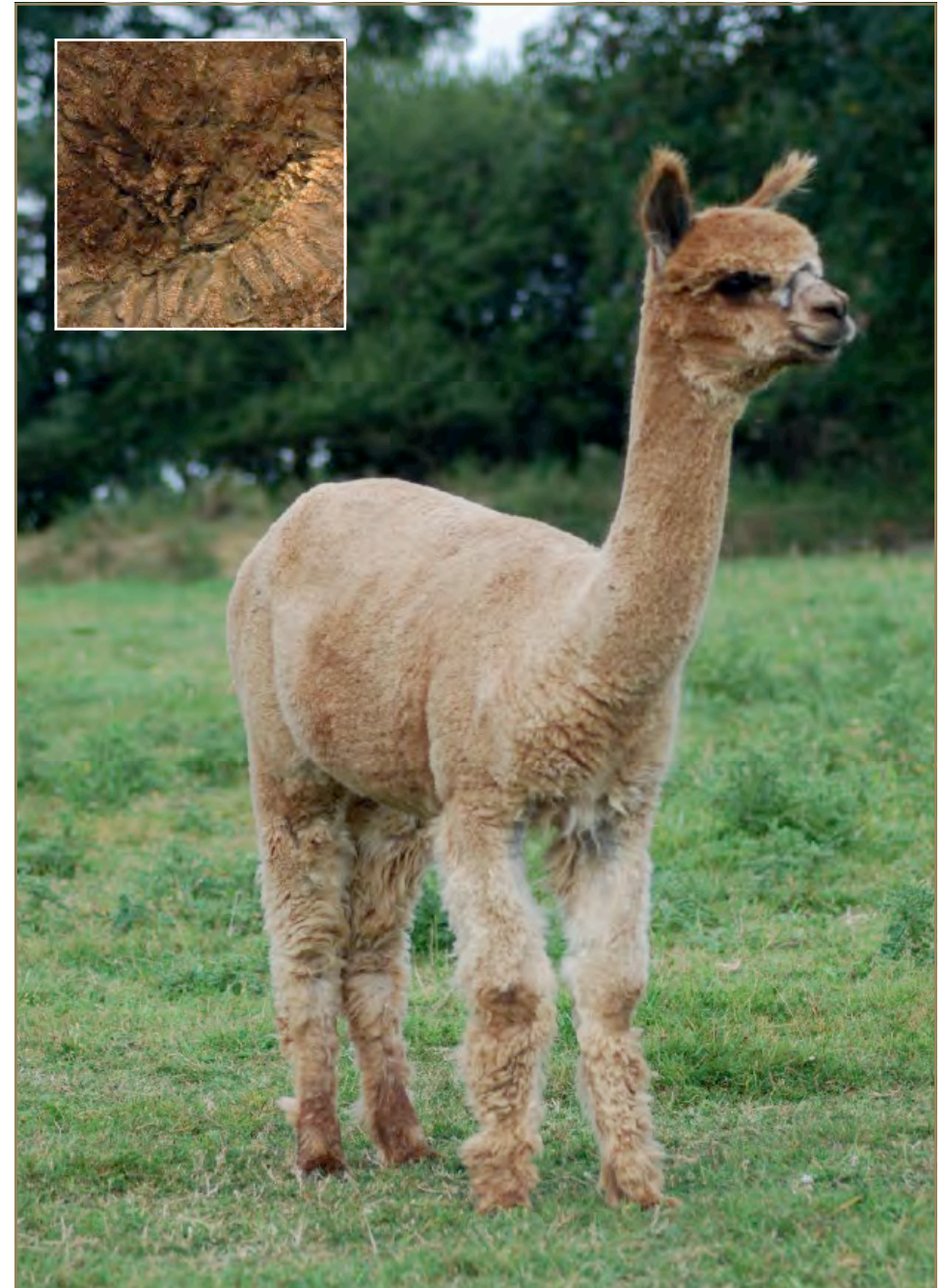
Show Results:

2016 BAS National Show Junior Female – 2nd

Fleece Stats:

2016: 15.6m, SD 3.2, CV 20.6, CF 100%

Red is the most stunning young fawn female, she has grown into an elegant huacaya with the most beautifully soft handling fleece. Red Skies was cria shorn in the summer of 2015 and then shorn in May 2016 with that fleece coming back at just 15.6 micron and an SD of only 3.2. The pedigree again includes Snowmass Puna Sky and Dovecote Jaquinto. Red was only shown once in 2016, taking part in the National Show where she was awarded a second in a competitive class of junior females.



LOT 8

BOZEDOWN ANTHEM (3097)

DOB: June 12th, 2013

Colour: Solid White Huacaya

UKBAS27040

gggs. Jol. Conquistador (SW)
ggs. Jol. Albion (SW)
gggd. Jol. Penelope (SW)
gs. Bozedown Alexi (SW)
gggs. Alonso BOZ (SW)
ggd. BOZ Anastasia (SW)
gggd. BOZ Constance (SW)
gggd. Delia BOZ (SW)

Sire: Bozedown Frisbee (SW)

ggs. Galaxy BOZ (SW)
gd. Bozedown Chan (SW)
gggs. Jol. Brandy
ggd. BOZ Alishia (SLF)
gggd. Jol. Memory BOZ (SLF)

ggs. Galaxy BOZ (SW)
gs. Bozedown Comet (SW)
ggd. Venus BOZ (SW)

Dam: Bozedown Comet's Gateway (SW)

gd. Keala of Bozedown (SW)

Mated to: Bozedown North Star (SW)

LMD: June 1st, 2016

Show Results:

2015 Alpaca Showtime: 1st Adult White Female

2016 Spring Alpaca Fiesta: 1st Adult White Female

2016: South of England: 1st Adult White Female

2016: South of England: Reserve Champion White Female

Fleece Stats:

2014: 15.5m, SD 3.4, CV 22, CF 100%

2015: 17.7m, SD 3.8, CV 21.4, CF 99.6%

2016: 18.8m, SD 4.3, CV 23.0, CF 98.2%



Bozedown Anthem is one of my a favourite females in both nature and quality of female. Anthem has great presence about her, and so she catches the eye every time we go into her paddock. She is the spitting image of her dam Bozedown Comet's Gateway in both stature and fleece characteristics. The striking qualities in Anthem have been achieved by overlapping both Bozedown Comet's and Bozedown Frisbee's genetics, so actually breeding the legendary Galaxy of Bozedown genetics on both dam and sires' side; thus achieving this winning combination. To take this one step further we have mated her to Bozedown North Star who is the son of Cambridge Navigator; layering in another proven genetic powerhouse onto an already proven genetic combination. Mmm...

LOT 9

ALPACA STUD Q THE MAGIC (D121)

DOB: 21st of June 2014

Colour: Solid White Huacaya

UKBAS26949

ggs: Pperuvian Augusto 6009 USA/RI39282

ggs: Snowmass Accoyocusani (W) USA/R803118

gggd: 4Peruvian Isabella 6545 (W) USA/RI66649

gs: Snowmass Star Quest (W) USA/R838135

ggs: Pperuvian Vendador G4568 (W) USA/RI2306

ggd: MSA Peruvian Sobrina (W) USA/R800783

gggd: Pperuvian Navidad R0651 (W) USA/RI23084

Sire: Snowmass Quetzalcoatl of AUK (W) UKBAS12870

ggs: Pperuvian Augusto 6009 (W) USA/RI39282

ggs: Snowmass Snow King (LF) USA/R803188

gggd: Pperuvian Flamboyant 5085 (W) USA/RI39179

gd: Snowmass Lily of the Valley (W) USA/R830292

ggs: Peruvian Hemingway G171 (W) USA/RI17888

ggd: Snowmass Peruvian Accoyanlianza (W) USA/RI82576

gggd: Pperuvian Lilly 4605 (W) USA/RI38738

ggs: Quetchuan Frottle of Arunvale (W) UKARUBASP0715

gs: Alpaca Stud Gilgamesh (W) UKBAS06494

ggs: Inca Dream (W) UKARUBASP0067

ggd: Arunvale Inspired Chayton (LF) UKARUBASP0522

gggd: Inca Winona (W) UKARUBASP0201

Dam: AUK Dirce (SW) UKBAS20378

ggggs: Pperuvian Vengador USA/I23063

ggs: DLA Pastoro CAN/I5893

gggd: Pperuvian Puka Pollera (SF) CAN/I3022

ggs: Dovecote Jaquinto of Alpaca Stud (SW) UKBCLI5085

ggggs: Peruvian Alianza Del Monte (SF) CAN/I9383

gggd: Okanagan'sJolene CAN/21787

gggd: Oacl Jo-Jo (SF) CAN/I8896

gd: Alpaca Stud Macarena (W) UKBAS19258

ggs: Inca William (W) UKARUBASP0061

ggd: Charlotte (W) UKARUBASP0638

gggd: Inca Moon (W) UKARUBASP0144

Mated to: Alpaca Stud Bacardi

LMD: 28th of July 2016



Show Results:

2016 South of England Show Intermediate White Female – 3rd

2016 National Show Intermediate White Female – 3rd

2015 Show Time Intermediate White Female – 2nd

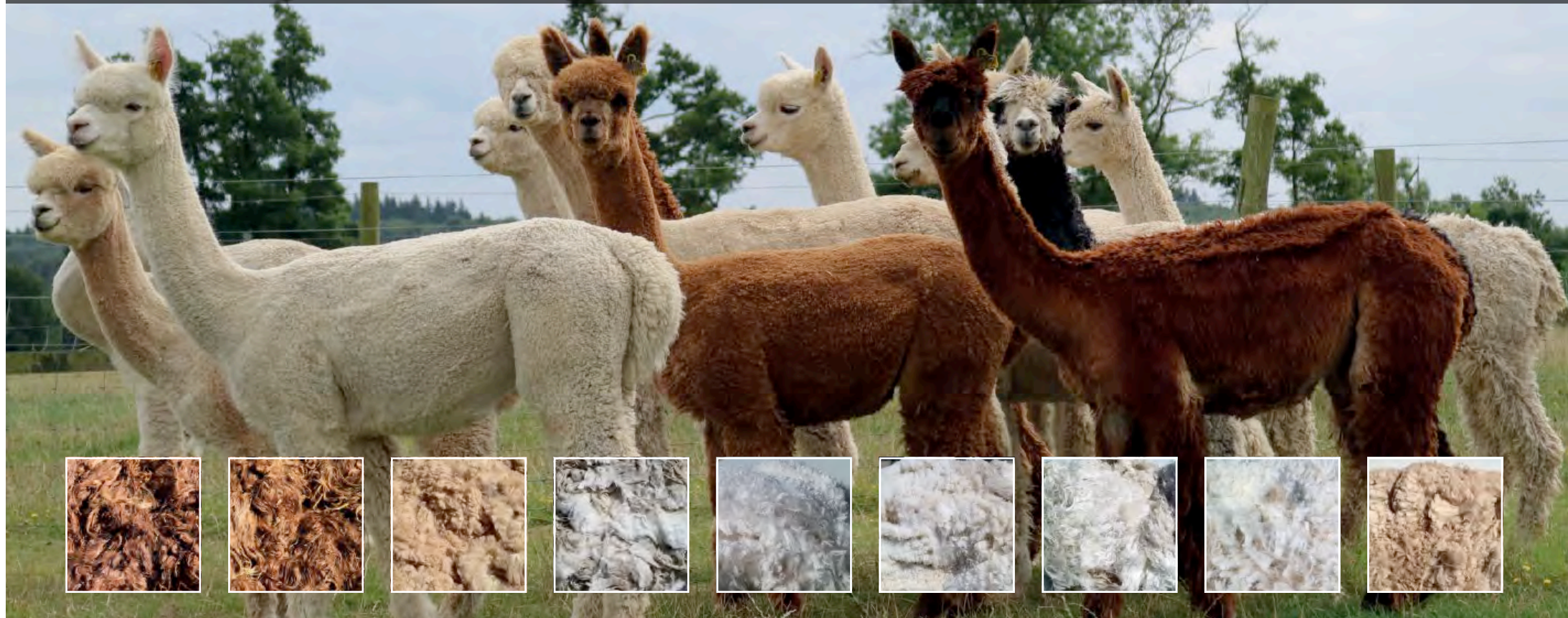
Fleece Stats:

2016: 18.3m, SD 3.6, CV 19.6, CF 99.5%

This female has it all. The looks, the fleece and boy does she have spirit! Q The Magic commands your eye the minute you see her. This beautiful, conformationally correct female has a silky soft fleece full of style. A sublime handle and excellent density round this package off perfectly. Q The Magic made her show debut in 2015 at Alpaca Showtime where she was awarded 2nd place in the highly competitive white intermediate female class behind the eventual best female in show. Currently pregnant with her first cria we are expecting big things from this girl. She has been mated to Alpaca Stud Bacardi who is a half-brother to Yves Jacques. Bacardi was the first place adult male at this year's BAS National Show.

LOT 10

BREEDERS SELECTION – 'SWEET SIXTEEN' - BOZEDOWN ALPACAS SELECT FROM 16 EXCEPTIONAL YEARLING FEMALES!



The purchaser of this very special Lot will have Free Choice between 16 exceptional yearling females – 10 huacayas and 6 suris – the 'Sweet Sixteen': our very latest top breeding developments: the Bozedown Intermediate female show team. This group has been assembled to include a broad selection of leading World Class alpaca genetics: dream Bozedown pedigrees to suit the most discerning breeder.

The success of the Breeders Selection Lot over previous years has resulted in delight and satisfaction for the buyers, without exception. Don't miss out on this wonderful opportunity. We welcome and recommend your inspection of the alpacas prior to the event.

N.B. Please note that only one of these females is available for sale.

Previous Classic Auction Bozedown Breeders Selection Lots:

2015: Sue Myerscough of Legacy Alpacas purchased the 2015 Futurity Champion Light huacaya female, Bozedown Foxy Lady.

2014: Viv Maton of Adara Alpacas purchased suri Bozedown Flame Lily, highly placed in Fleece shows.

2013: Barbara Hetherington of Beck Brow Alpacas purchased Bozedown Campari; she won Champion Brown huacaya female & Best of British at the Spring Alpaca Fiesta 2014. Campari's son, Beck Brow On the Money has won multiple huacaya Champions.

UK Alpaca Ltd

BRITISH ALPACA AT ITS BEST



Exquisite British alpaca yarns made from the fleeces of alpacas farmed in Britain. Natural and dyed colours in double knit and 4-ply with fashion led pattern support. Available in balls or on cone.

We offer good prices for your fleece in order to achieve the best return for alpaca breeders. Very competitive wholesale pricing for re-sellers and growers who sell their fleece to UK Alpaca.

Visit our website at www.ukalpaca.com

Contact Chas Brooke at info@ukalpaca.com or 01884 243579 for wholesale enquiries

UK Alpaca Ltd, Vulscombe Farm, Pennymoor, Tiverton, Devon EX16 8NB



ALPACA SHOWTIME



ALPACA SHOWTIME IS BACK THIS AUTUMN WITH A NEW FORMAT!

28th, 29th & 30th October 2016

Houghton Hall Equestrian Centre, New Manor Farm,
Sawtry Way, Houghton, Cambs PE28 2DY

Judge: Steve Rideout (AUS)

We are pleased to announce that the 3rd Annual Alpaca Showtime event will be returning in October, and is once again open to all alpaca enthusiasts, breeders and owners.

Details for how and when to enter will be released soon, so if you want to be in with the chance of taking home one of our much coveted trophies you can keep up to date through our website.

www.alpacashowtime.co.uk



PEN AUCTION (SALE)



LOT II

ALPACA STUD G.L. NEW-PER-SPECK-TIVE (E20)

DOB: 16th of May 2015

Colour: Harlequin Grey Huacaya Male

BNBAS09126

gs: Snowmass Matrix (Beige)

Sire: Snowmass Golden Legend of AUK (DF)

gd: Snowmass Golden Serenity (MF)

gs: Dovecote Jaquinto of Alpaca Stud (W)

Dam: Alpaca Stud Hokey Pokey (DG)

gd: Inca Raziya (Dbr)

Fleece Stats:

2016: 18.9m, SD 4.1, CV 21.7, CF 98.8%



LOT 12

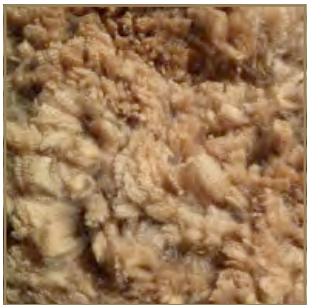
Are you looking for a new in-house Stud Male? We have 4 exciting prospects here for you to choose from: good, solid, proven Bozedown pedigrees, with a wealth of genetics among them, all from Champion bloodlines, including Bozedown Achilles, Bozedown Galaxy, Bozedown Olympus, AUK Nyetimber, Bozedown Chicago, Jolimont Rodrigo and Bozedown Patriot. We believe you

will find just what you are looking for to fit your farm aims and profile. Inspect these boys closely and you will see good solid bone structure and outstanding fleece characteristics, including some staggeringly fine micron fleeces. The successful bidder for this Lot will be able to select whichever Stud best fits their farm aims and profile. Fertility guaranteed.

BOZEDOWN SALVADOR (3146)

DOB: July 11th 2013

2016: 16.9m, SD 3.5, CV 20.6, CF 100%



BOZEDOWN VELOCITY (3243)

DOB: July 13th 2014

2016: 16.0m, SD 3.0, CV 19.1, CF 100%



BOZEDOWN SPELLBOUND (3252)

DOB: June 12th 2014

2016: 20.2m, SD 4.2, CV 19.3, CF 96.2%



BOZEDOWN DAYDREAMER (3284)

DOB: June 30th 2014

2016: 19.0m, SD 3.9, CV 20.6 CF 98.4%



LOT 13

ALPACA STUD I.E. MASTERFUL (E90)

DOB: 9th of June 2015

Colour: Solid White Huacaya Male

BNBAS09232

gs: Snowmass Invincible (W)

Sire: Snowmass Invincibly Elite XX of AUK (W)

gd: Snowmass Sweet Serenity (MF)

gs: Alpaca Stud Gauthier (W)

Dam: Alpaca Stud Miss Sweden (Beige)

gd: Inspired Chayton (LF)

Show Results:

2016 BAS National Show Junior White Male – 3rd

Fleece Stats:

2016: 16.2m, SD 3.4, CV 21.1, CF 100%



LOT 14

ALPACA STUD WISE GUY (E116)

DOB: 17th of June 2015

Colour: Solid Medium Brown Huacaya Male

BNBAS09158

gs: Dovecote Jaquinto of Alpaca Stud (SW)

Sire: Alpaca Stud Nyetimber (RG) UKBAS12791

gd: ARU Cambridge Minuet (MG)

gs: Aztec Dream (MF)

Dam: Cambridge Belinda (DBR) UKBAS02697

gd: Inca Kiona (Mbr)

Show Results:

2016 BAS National Show Junior Brown Male – 3rd

Fleece Stats:

2016: 18.4m, SD 4.6, CV 24.7, CF 98.4%



LOT 15

BOZEDOWN SHEER BLISS (3196)

DOB: June 23rd, 2014

Colour: Solid White Huacaya

UKBAS27376

gs. Bozedown Alexi (SW)

Sire: Bozedown Frisbee (SW)

gd. Bozedown Chan (SW)

Dam: Annabella of Bozedown (SW)

Mated to: Bozedown Sub-Zero

LMD: June 2nd, 2016

Fleece Stats:

2015: 19.0m, SD 4.2, CV 22.2, CF 98.5%

2016: 19.5m, SD 4.1, CV 20.8, CF 98.2%



LOT 16

BOZEDOWN ROSSELLINI (3244)

DOB: June 13th, 2014

Colour: Solid Beige Huacaya

UKBAS27368

gs. Jol Rodrigo II of Bozedown (SW)

Sire: Bozedown Ascendant (BG)

gd. Bozedown Andromeda (SW)

gs. Jollimont Reagan of Bozedown (SW)

Dam: Bozedown Senara (BG)

gd. Bozedown Briar II (SW)

Mated to: Bozedown Neo (SLF)

LMD: June 23rd, 2016

Fleece Stats:

2015: 17.9m, SD 3.6, CV 20.1, CF 99.9%

2016: 18.0m, SD 3.3, CV 18.2, CF 99.7%



LOT 17

ALPACA STUD NEW HOPE (E23)

DOB: 17th of May 2015

Colour: Solid White Suri

UKBAS28005

gs: Inca Nafuna (W)

Sire: Alpaca Stud Hood (W) UKBAS04461

gd: Inca Susi (W)

gs: Alpaca Stud Lucky Luciano (W)

Dam: Alpaca Stud Lady Luck (W) UKBAS23738

gd: Cambridge Vintage (W)

Fleece Stats:

2016: 20.2m, SD 4.4, CV 21.6, CF 98.2%



LOT 18

JESSAMINE PENNY BLACK (1653)

DOB: 24th of June 2014

Colour: Solid Black Huacaya

UKBAS25552

gs: Dovecote Jaquinto of Alpaca Stud (SW)

Sire: Alpaca Stud Nyetimber (RG) UKBAS12791

gd: ARU Cambridge Minuet (MG)

gs: Shaft's Dream (STBlk)

Dam: Jessamine Shaft's Iratze (STBlk) UKJESBAS01561

gd: Jessamine Suvanadiva (SBlk)

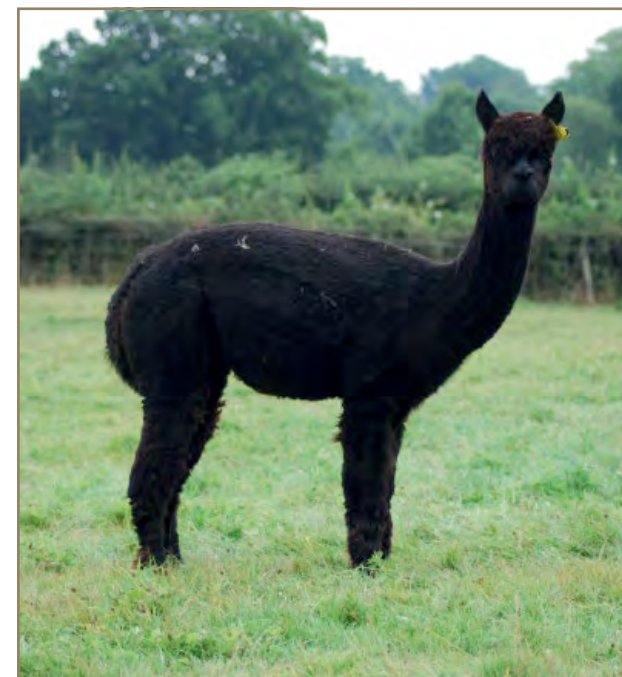
Mated to: Snowmass Midnight Legend

LMD: 1st of June 2016

Scanned Pregnant

Fleece Stats:

2016: 23.6m, SD 4.6, CV 19.7, CF 92.1%



LOT 19

BOZEDOWN JUSTICE II (2628)

DOB: May 17th, 2011

Colour: Solid Light Fawn

UKBAS27165

gs. MFI Peruvian Jericho (SDF)

Sire: MFI Point Blank (SBLK)

gd. MFI Pansy (SBLK)

gs. Thunder of Bozedown (SBLK)

Dam: Bozedown Shadow (SBLK)

gd. Betsy of Bozedown (SBLK)

Mated to: Bozedown Code Breaker (SBLK)

LMD: June 14th, 2016

DARK BROWN MALE CRIA AT FOOT

DOB: May 30th, 2016

Sire: LMFI Peruvian Dynamics (SW)

Fleece Stats:

2012: 19.4m, SD 4.1, CV 21.0, CF 98.5%

2013: 21.1m, SD 4.9, CV 23.3, CF 95.1%

2014: 20.8m, SD 5.1, CV 24.7, CF 94.4%



LOT 20

BOZEDOWN FANCY DANCER (1993)

DOB: June 7th, 2009

Colour: Solid Beige

UKBAS14647

gs. Galaxy of Bozedown (SW)

Sire: Bozedown Comet II (SW)

gd. Venus of Bozedown

Dam: Rayna of Bozedown (SW)

Mated to: Bozedown Ascendant (BG)

LMD: June 14th, 2016

SOLID WHITE FEMALE CRIA AT FOOT

DOB: May 27th, 2016

Sire: Bozedown Ascendant (SBG)

Show Results:

2010 National Show: 1st Junior Light Female

2011 Futurity: Champion Light Female

2012 Futurity: Champion Light Female

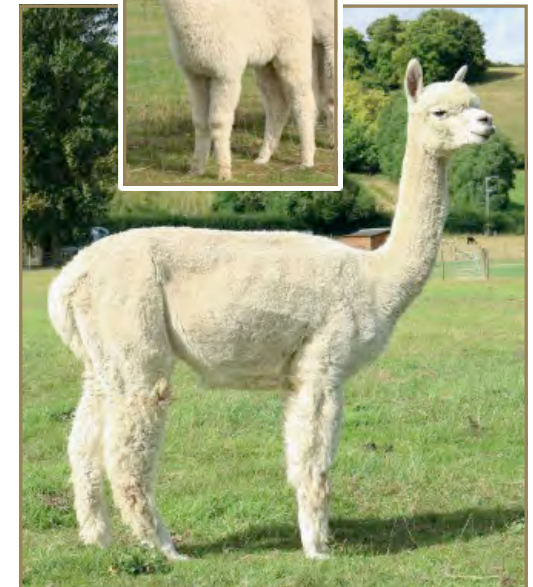
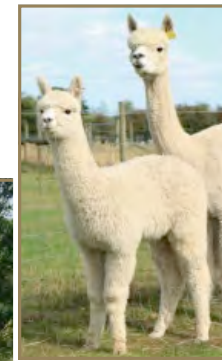
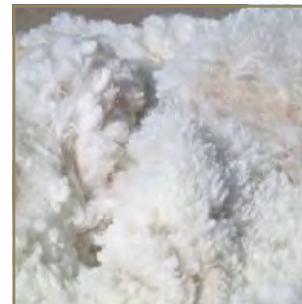
Fleece Stats:

2011: 17.9m, SD 3.5, CV 19.7, CF 99.7%

2012: 17.8m, SD 3.8, CV 21.4, CF 99.6%

2013: 18.7m, SD 4.3, CV 23.1, CF 97.6%

2016: 20.6m, SD 5.1, CV 24.6, CF 94.5%



LOT 21

ALPACA STUD SPELLBOUND (D85)

DOB: 8th of June 2014

Colour: Solid White Huacaya

UKBAS26948

gs: Dovecote Jaquinto of Alpaca Stud (SW)

Sire: Alpaca Stud Yves Jacques (W) UKBAS25305

gd: Lady Cameron (W)

gs: Alpaca Stud Antonio (W) UKBCL15083

Dam: AUK Isabela (SW) UKBAS17210

gd: Inca's Induma

Mated to: Snowmass Invincibly Elite

LMD: 6th of June 2016

Scanned Pregnant

Fleece Stats:

2016: 18m, SD 3.3, CV 18.4, CF 99.9%



LOT 22

ALPACA STUD FIRST BLUSH (E142)

DOB: 27th of June 2015

Colour: Solid White Huacaya

UKBAS28046

gs: Snowmass Invincible Elite XX of AUK (W)

Sire: Alpaca Stud I.E. War Horse

gd: ARU Alpaca Stud Waltz (SW)

gs: Dovecote Jaquinto of AUK (SW)

Dam: Alpaca Stud Dancer (SW) UKBAS20342

gd: Bowford Bussel (SW)

Fleece Stats:

2016: 19.6m, SD 4.9, CV 25.3, CF 97.1%



LOT 23

BOZEDOWN AMARETTO (1867)

DOB: May 24th, 2008

Colour: Solid Mid Fawn Huacaya

UKBAS11602

Sire: Galaxy of Bozedown (SW)

gs: Olympus of Bozedown (SW)

Dam: Bozedown Arcade (SLF)

gd: Lujana of Bozedown (SW)

Mated to: Bozedown Achilles (LF)

LMD: June 1st, 2016

Show Results:

2009 British Alpaca Futurity: Champion Fawn Female

2009 SWAG: Champion Fawn Female

Fleece Stats:

2009: 16.6m, SD 3.2, CV 19.2, CF 99.9%

2011: 20.3m, SD 4.3, CV 20.9, CF 97.9%

2014: 22.1m, SD 4.8, CV 21.6, CF 93.7%

2016: 23.3m, SD 5.2, CV 22.1, CF 90.9%



LOT 24

BOZEDOWN SARA (2439)

DOB: June 24th, 2010

Colour: Solid White Huacaya

UKBAS24336

Sire: Trojan of Bozedown (SLF)

Dam: Mora of Bozedown (SDF)

Mated to: Bozedown Ascendent

LMD: June 16th, 2016

Fleece Stats:

2012: 23.8m, SD 4.6, CV 19.2, CF 92.6%

2014: 21.9m, SD 4.5, CV 20.7, CF 96.1%

2016: 25.1m, SD 4.9, CV 19.5, CF 87.2



LOT 25

ALPACA STUD MORNING STAR (E98)

DOB: 12th of June 2015

Colour: Solid Mid Brown Suri

UKBAS28073

gs: Sierra Bonita's Macgyver's Synergy

Sire: GLR The Synergist of Alpaca Stud (Imp) (AUKBASUK900) [Solid Black]

gd: Peruvian Autumn's Leaf (USA)

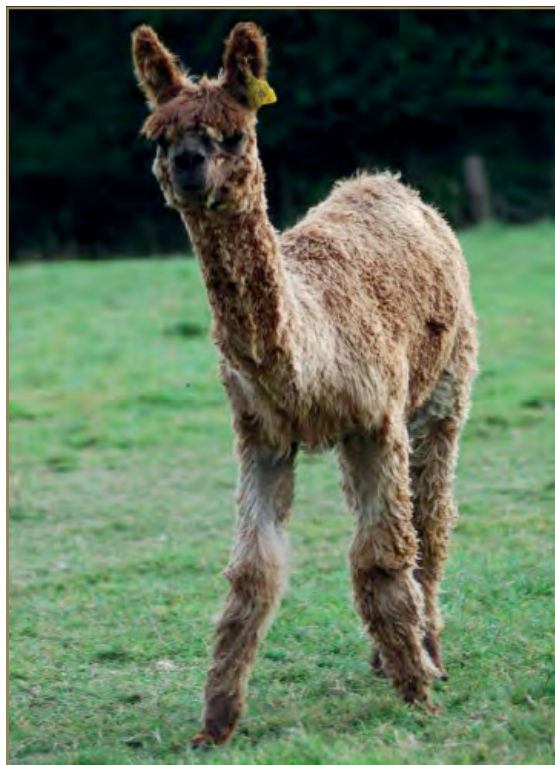
gs: Alpaca Stud Suri Phoenix [Rose Grey] Suri

Dam: Alpaca Stud Venus (AUKBASUK1035) [Solid Light Fawn] Suri

gd: Alpaca Stud Khufu [Solid Light Brown] Suri

Fleece Stats:

2016: 18.5m, SD 4.2, CV 22.9, CF 98.6%



LOT 26

ALPACA STUD M.L. BLACK IS BLACK (D94)

DOB: 11th of June 2014

Colour: Solid Black Huacaya

UKBAS25624

gs: Snowmass Sterling Legend (BLK)

Sire: Snowmass Midnight Legend of Auk (Blk)

gd: Snowmass Earth Angel XX

gs: Benjiro of Alpaca Stud (Blk)

Dam: Alpaca Stud Olga I (Blk)

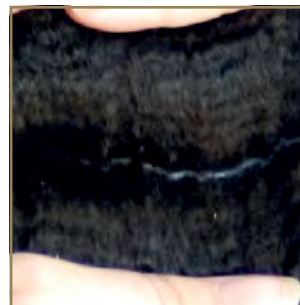
gd: Olga of Alpaca Stud (Blk)

Mated to: Alpaca Stud Nyetimber

LMD: 15th of August 2016

Fleece Stats:

2016: 25.2m, SD 5, CV 19.8, CF 84.8%



LOT 27

BOZEDOWN JIVE (2573)

DOB: May 7th, 2011

Colour: Solid White Huacaya

UKBAS25530

Sire: Tudor of Bozedown (SW)
gs. Bozedown Alexi (SW)

Dam: Bozedown Clover (SW)
gd. Jalynn of Bozedown (SW)

Mated to: Bozedown Ascendant

LMD: July 13th 2016

WHITE FEMALE CRIA AT FOOT

D.O.B June 12th, 2016

Sire: Bozedown North Star (SW)

Fleece Results:

2012: 18.5m, SD 3.1, CV 16.8, CF 99.7%

2016: 23.8m, SD 4.3, CV 18.1, CF 92.5%



LOT 28

BOZEDOWN DIVINATION (2539)

DOB: May 17th, 2011

Colour: Solid Light Fawn Huacaya

UKBAS27114

gs. Talisman of Bozedown (SDF)
Sire: Bozedown Omen (SMF)

gd. Gemma of Bozedown (SMF)
gs. Galaxy of Bozedown (SW)

Dam: Bozedown Inspiration (SLF)
gd. Keelin of Bozedown (SW)

Mated to: Bozedown Ascendant (SBG)

LMD: July 5th, 2016

LIGHT FAWN FEMALE CRIA AT FOOT

DOB: June 12th, 2016

Sire: Bozedown Achilles (SLF)

Fleece Stats:

2012: 17.7m, SD 4.1, CV 23.5, CF 99.2%

2016: 21.6m, SD 5.1, CV 23.4, CF 92.7%



LOT 29

ALPACA STUD TILLINGTON (D3)

DOB: 3rd of May 2014

Colour: Dark Grey

UKBAS25819

gs: Dovecote Jaquinto of Alpaca Stud (SW)

Sire: Alpaca Stud Nyetimber (RG) UKBAS12791

gd: ARU Cambridge Minuet (MG)

gs: Classical Ikon of Classical

Dam: Iconic Belinda (Blk) UKBAS21598

gd: Shalf's Belinda (DBR)

Mated to: Snowmass Roll of Honour

LMD: 15th of August 2016

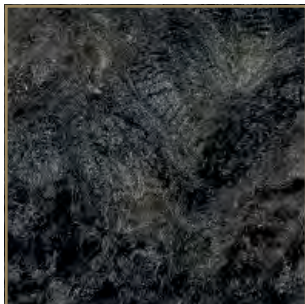
Show Results:

2015 Heart of England Alpaca Fiesta Junior Grey Female – 2nd

2015 South of England Intermediate Grey Female – 3rd

Fleece Stats:

2016: 19.1m, SD 4, CV 20.8, CF 98.7%



LOT 30

ALPACA STUD SYNERGISTS CHARM (D78)

DOB: 7th of June 2014

Colour: Solid Mid Fawn Suri

UKBAS29045

gs: Sierra Bonita's Macgyver's Synergy

Sire: GLR The Synergist of Alpaca Stud (Blk) UKBAS12875

gd: Peruvian Autumn's Leaf (MB)

gs: Aymara Dream (DF)

Dam: Ayamaras Amodini (MBR) UKBAS00960

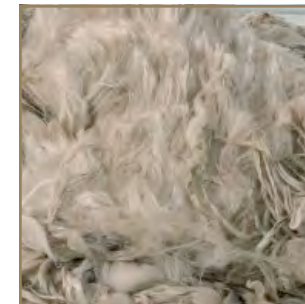
gd: Inca Miniya (MF)

Mated to: Alpaca Stud Phoenix Gryffindor

LMD: 15th of August 2016

Fleece Stats:

2016: 22.6m, SD 5, CV 22.3, CF 91.2%



LOT 31

BOZEDOWN MIDNIGHT (3286)

DOB: July 3rd, 2014

Colour: Solid Black Huacaya

UKBAS27384

gs: Dovecote Jaquinto of Alpaca Stud

Sire: Alpaca Stud Nyetimber (RG)

gd: ARU Cambridge Minuet (RG)

gs: Thunder of Bozdown (SBLK)

Dam: Bozdown Trinity (SBLK)

gd: Pepita of Bozdown (SBLK)

Mated: Bozdown Bourbon (SMBR)

LMD: June 23rd, 2016

Fleece Stats:

2015: 20.2m, SD 4.5, CV 22.4, CF 96.7%

2016: 21.7m, SD 4.3, CV 19.9, CF 96.1%



LOT 32

BOZEDOWN JAZZ (3077)

DOB: June 9th, 2013

Colour: Solid Mid Brown Suri

UKBAS27260

gs: Bozdown Marley (SMBR)

Sire: Bozdown Reggae (SBLK)

gd: Bozdown Geneva (SMBR)

gs: Dazzler of Bozdown (SW)

Dam: Bozdown Natalie (SW)

gs: Axella of Bozdown (SW)

Mated to: Bozdown Singapore (SMBR)

LMD: June 29th, 2016

Fleece Stats:

2014: 22.4m, SD 5.5, CV 24.4, CF 77.6%

2015: 26.6m, SD 5.7, CV 16.8, CF 73.4%

2016: 25.9m, SD 5.4, CV 21.0, CF 82.8%



LOT 33

ALPACA STUD I.E. ISABELLA (D65)

DOB: 30th of May 2014

Colour: Solid Beige Huacaya

UKBAS29044

gs: Snowmass Invincible (W)

Sire: Snowmass Invincibly Elite XX of AUK (W) UKBAS12871

gd: Snowmass Sweet Serenity (MF)

gs: Alpaca Stud Gilgamesh (W)

Dam: AUK Gilly's Dancer (LF) UKBAS27971

gd: Alpaca Stud Lambada (W)

Mated to: Snowmass Golden Legend

LMD: 1st of June 2016

Scanned Pregnant

Fleece Stats:

2016: 19.3m, SD 3.8, CV 19.5, CF 99.1%



LOT 34

ALPACA STUD SOFIA (D139)

DOB: 1st of July 2014

Colour: Solid Dark Fawn Huacaya

UKBAS29047

gs: UKBAS04434 - Alpaca Stud Warrior (SMF)

Sire: Alpaca Stud Inca The Pugilist (SLBR) UKBAS20045

gd: ARU Cambridge Magic Lady (SW)

gs: Dovecote Jaquinto of AUK (SW)

Dam: Alpaca Stud Dream Big (SW) UKBAS27962

gd: Angela (SW)

Mated to: Snowmass Roll of Honour

LMD: 15th of August 2016

Fleece Stats:

2016: 18.4m, SD 4, CV 21.6, CF 99.4%



LOT 35

BOZEDOWN CHARITY (2601)

DOB: May 12th, 2011

Colour: Solid Mid Fawn Huacaya

UKBAS27159

gs: Sokrates of Simplon (SW)

Sire: Bozedown Minstrel (SDF)

gd: Periwinkle of Bozedown (SDF)

gs: Orion of Bozedown (SLF)

Dam: Bozedown Ali II (SLF)

gd: Lupin of Bozedown (SLF)

Mated to: Bozedown Revel

LMD: June 8th, 2016

Fleece Stats:

2012: 16.9m, SD 3.8, CV 22.2, CF 100%

2014: 17.6m, SD 4.0, CV 22.9, CF 99.6%

2016: 18.4m, SD 4.2, CV 22.9, CF 98.8%



LOT 36

BOZEDOWN ABBY (3209)

DOB: May 31st, 2014

Colour: Solid White Huacaya

UKBAS27311

gs: Bozedown Chicago II (SW)

Sire: Bozedown Tradition (SW)

gs: Berenice of Bozedown (SW)

gs: Olympus of Bozedown (SW)

Dam: Bozedown Madame (SW)

gs: Yuliana Bozedown (SW)

Mated to: Bozedown Galactica (SW)

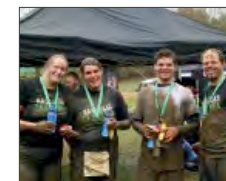
LMD: June 15th, 2016

Fleece Stats:

2015: 16.7m, SD 4.6, CV 27.4, CF 100%

2016: 22.1m, SD 5.1, CV 22.9, CF 94.5%





Classic 2012: Bozdown Magic Charm

National Show 2016

Beck Brow Match Point - Reserve Champion

Classic 2012: Alpaca Stud Gypsy

South of England 2016

Alpaca Stud P.S. Romany Skies - Champion

Classic 2012: Magic Charm

Scottish Alpaca Championship 2016

Beck Brow Seventh Heaven - Champion

Classic 2013: Breeder's Selection - Boz Campari

NWAG Alpaca Championship 2016

Beck Brow on the Money - Champion

Classic 2013: Bozdown Roman

National Show 2016

C-S Alpacas Rafael - 2nd

Classic 2013: Alpaca Stud Let It Be

Yorkshire Alpaca Show 2015

Merrifield Sgt. Pepper - 1st

Classic 2014: Bozdown Honolulu

Alpaca Fiesta 2016

Merrifield The Black Knight's Crusader - 1st

Classic 2014: Alpaca Stud Lily II

South of England 2016

Pinnacle Tabitha - Reserve Champion

Classic 2012: Alpaca Stud Inca Fusion Snapshot

Futurity 2013

AUK Anarchy - Champion Owned By Popham

Classic 2012: Bozdown Jumper

Alpaca Fiesta 2016

Meon Valley Dynasty - 1st

Classic 2012: Jessamine Hustle

National Show 2016

Rushmere Imperator - 1st

Classic 2013: Alpaca Stud Will 'o' Wisp

Spring Fiesta 2016

C-S Alpacas Whisper - Champion

Classic 2013: Alpaca Stud Christiana

National Show 2016

Alpaca Stud I.E. Sky's The Limit - 1st

Classic 2013: Breeder's Selection - Boz Campari

Alpaca Fiesta 2014

Owned by Beck Brow Alpacas - Champion & BB

Classic 2014: Alpaca Stud Sunset

National Show 2016

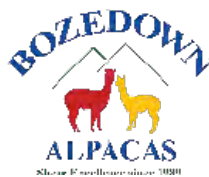
Alpaca Stud P.S. Red Skies - 2nd

Classic 2014: Bozdown Revel

South of England 2016

Merrifield Bournville - Reserve Champion

www.bozdown-alpacas.co.uk
Email: info@bozdown-alpacas.co.uk
Tel: + 44 (0) 7718750303



www.alpacastuduk.com
Email: info@alpacastuduk.com
Tel: + 44 (0) 7979651742